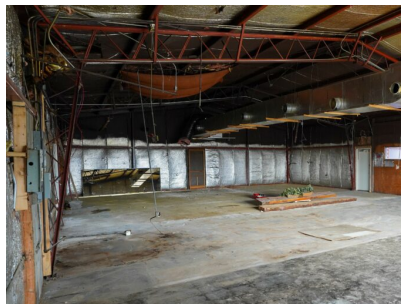
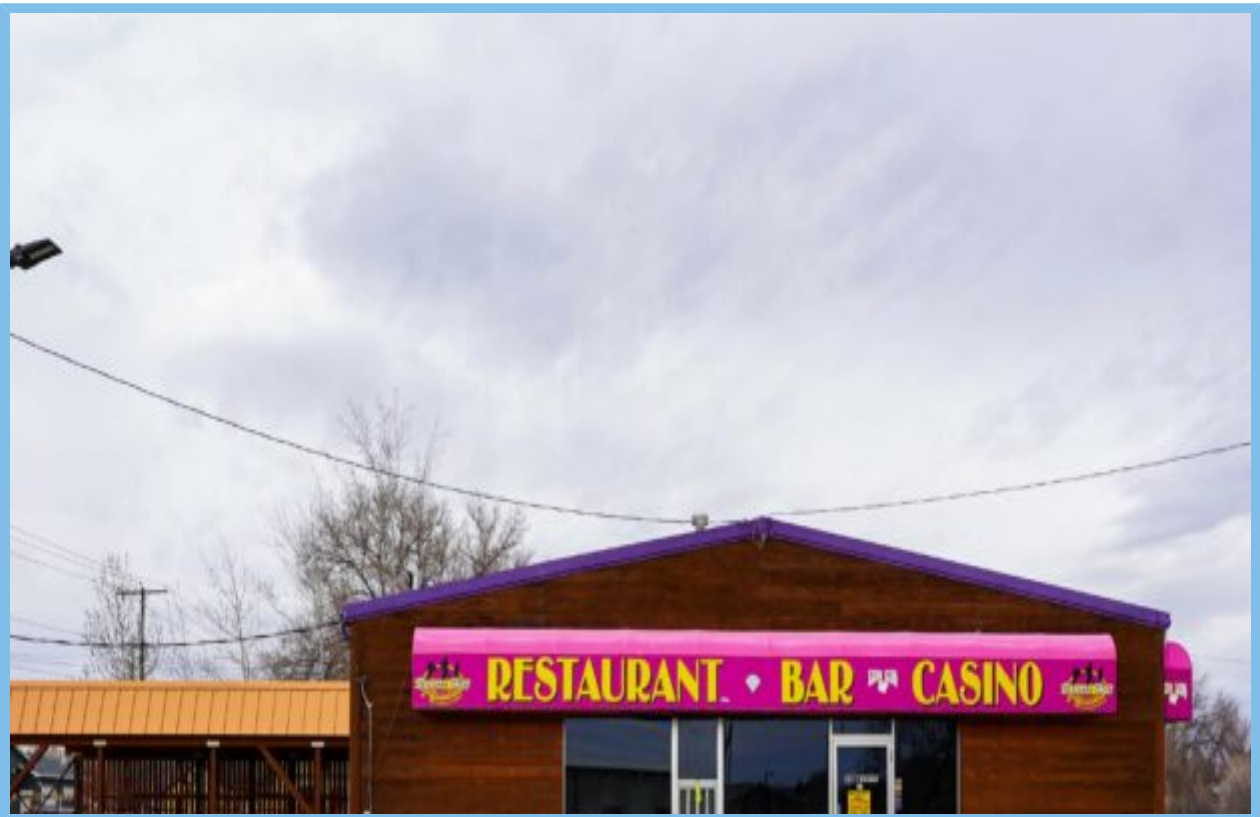




give us a call at 406.259.6666

Columbus Commerical Building

Columbus | \$ 650,000.00





give us a call at 406.259.6666

Columbus Commerical Building

Commercial

Acres: 0.482

In the vibrant business district of Columbus, Montana, this 2400 square foot commercial building offers excellent frontage on Highway 78; a high traffic area connecting various towns like Absarokee, Fishtail, Red Lodge, Nye, and Joliet. With a size of 60'x40', the building offers ample room for expansion and is ripe for renovation to cater to any business needs. The strategic location provides easy access for a diverse range of customers, including tourists, local businesses, working-class communities, Stillwater mine employees, and those passing through Interstate 90, which is conveniently only about half a mile away. This property features an existing asphalt parking lot, a covered patio, and a concrete apron, offering convenience and functionality for potential business ventures. The excellent location and accessibility make it an ideal spot for any entrepreneurial endeavor looking to capitalize on the town's future growth. Whether you're looking to start a new business or expand an existing one, this building presents a valuable opportunity to establish a presence in a thriving area with tremendous potential for success. Don't miss out on the chance to secure a prime spot with endless possibilities for growth and prosperity.

Click on this link to view the map. [Map](#)